



UNIVERSAL[®]

I M P L E M E N T S

COMPLETE RANGE OF PRODUCTS



PRODUCT BROCHURE

www.universalimplements.com

Introduction & Infrastructure

1-2

Rotary Tillers

3-18

— Xtra HD	4
— Super Series	5
— U Series	8
— Sprinter Series	9
— Uni-Light Series	11
— Mini Series	15
— Eco Smart	17
— Roto Puddler	18

Ploughs

19-28

— Mounted Disc Plough	20
— Universal Disc Plough	21
— Standard Model Disc Plough	22
— Reversible Mounted Disc Plough	23
— Light Duty Disc Plough	24
— Mould Board Plough	25
— Universal Super M.B. Plough	26
— Reversible M.B. Plough	27
— Mini Series M.B. Plough	28

Harrows

29-37

— Heavy Duty Hydraulic Harrow	30
— Medium Duty Hydraulic Harrow	31
— Compact Model Disc Harrow	32
— Mounted Offset Disc Harrow	33
— Tandem Disc Harrow	34
— Poly Disc Harrow	35
— U-Series Mounted Offset Disc Harrow	36
— Trailed Disc Harrow	37
— UP Model Disc Harrow	38





Cultivators

39-45

- Extra Heavy Duty Spring Loaded Cultivator 40
- Heavy Duty Vertical Spring Loaded Cultivator 41
- Bharat Spring Loaded Cultivator 42
- Universal Profile Rigid Cultivator 43
- Universal Bracket Rigid Cultivator 44
- Universal Sub Soiler 45

Landscaping

46-53

- Laser Guided Land Leveler 47
- Heavy Duty Land Leveler 48
- Post Hole Digger 49
- Rotary Slasher 50
- Disc Ridger 51
- Universal Tyne Ridger 52
- Universal Super Tyne Ridger 53

Haulage

54-55

- Tipping Trailer 55



INTRODUCTION

Bharat Engineering Company was established in the year 1966. Today, BEC is one of the largest manufacturer and exporter of agricultural tillage, haulage and landscaping equipment in Asia and Africa.

With over 50 years of experience and presence in 20 states in India and over 25 countries globally, BEC continues to provide long lasting and high quality products under the “UNIVERSAL IMPLEMENTS” brand name.

Our diverse range of products includes Rotary tillers (Rotavators), Disc Harrows, Spring Loaded and Rigid Cultivators (Tillers), Laser Levellers, Disc Ploughs, Mould Board Ploughs, Ridgers, Tipping Trailers, Sub Soilers, Rotary Slashers/Movers, Post Hole Diggers, Rotary Tiller Blades, Harrow Discs and Shovels of various designs.

VISION

Aim at achieving the distinction of being the first choice of farmers in Indian and International markets, through highest competency in manufacturing of high performance farm equipment and their parts

MISSION

To innovate and develop need-based high performance value-for-money agricultural equipment by creating an efficient manufacturing system, inculcating a robust quality oriented culture, developing leaders at all levels of the organization and ensuring a wide network of long standing, mutually beneficial relations in India as well as International markets.

CORE VALUES



Focus on
Quality



Integrity



Commitment



Innovation



Customer
Satisfaction

INFRASTRUCTURE

Our manufacturing plant at Karnal, Haryana (INDIA), spread over about 7 acres (305000 sq. feet) of land is equipped with a variety of high precision machinery and a full team of qualified and experienced Managers, Engineers and Technicians. We have in-house product designing and development using sophisticated 3D designing software and every new product that we develop undergoes through field testing under a variety of conditions. We also employ machines and processes such as **Shot blasting and Powder coat painting for long lasting and great looking product finish** Our dedicated process and quality control setup with stringent quality checks ensures that our products are much more resistant to wear and tear and last much longer.

We have in-house manufacturing of implement parts, employing machines such as CNC, VMC, HMC, Gear hobbers, bevel generator, broach, CNC wire-cut machine, High Precision Laser cutting machines and a variety of hydraulic and mechanical presses. The material used in all UNIVERSAL IMPLEMENTS parts is metallurgically tested and goes through stringent quality checks before being used in the final product.

Since most of our implement parts are machined in-house, this gives us a lot more control over the quality of the parts that are used in our implements. **This also ensures ready availability of parts and accessories to cater to the wear and tear and accidental damage related requirements.**

Certified with ISO 9001: 2015 & CE Certification for Our Quality Management Systems.





- UNIVERSAL XTRA HD
- UNIVERSAL SUPER SERIES
- UNIVERSAL U-SERIES
- UNIVERSAL SPRINTER
- UNIVERSAL ECO-SMART
- UNIVERSAL UNI-LIGHT SERIES
- UNIVERSAL MINI SERIES
- UNIVERSAL ROTO PUDDLER

UNIVERSAL ROTARY TILLERS



UNIVERSAL XTRA HD

MULTI SPEED GEAR DRIVE

Code **BEXRTMSG**

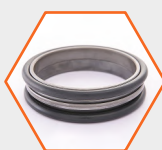


Multi Speed
Gear Box

Duo Cone
Seal

Heavy Duty
Structure

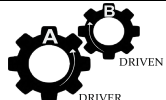
Heavy Duty
Plate Lift



Features & Benefits

- **Xtra Heavy Duty Rotary tillers suitable for pulverising the thick and fibrous residue of crops such as Banana, Sugarcane, Papaya etc.**
- Extra Heavy construction for sturdy operations while crushing crops residue including the roots and the stems of crops such as Banana, Papaya, Sugarcane.
- Gear drive. Multi speed gearbox. Compatible with 540 and 1000 PTO RPM.
- Suitable for all soil types.
- Increases soil aeration and pulverisation of crop residue increases the soils fertility.
- Easily adjust the cutting depth by using the side skid depth adjustment.
- Extra heavy duty rotor and rotor flanges for toughest operating conditions
- UNIVERSAL SUPER Boron Steel Blades.
- Available in both Oil/Grease dead Hub(Optional).

Product Specifications

Description	BEXRTMSG-150/1236	BEXRTMSG-175/1242	BEXRTMSG-200/1248	BEXRTMSG-225/1254	GEAR RATIO CHART			
Gear Box	Multi Speed							
No. of Blade	36	42	48	54				
No. of Flange	7	8	9	10				
Rotor Type	Seamless Pipe				P.T.O RPM	A	B	Rotor RPM
P.T.O. RPM	540/1000 (Optional)				540	13	20	176
Type of Side Drive	Gear					20	13	415
Side Disc Attachment	Optional					17	16	287
3-Point Linkage / Category	Cat-I & Cat-II					16	17	254
Rotor Flange Diameter (mm)	270					18	15	324
Gear Box Over Load Protection	Shear Bolt					15	18	225
Width of Cut (cm-Approx)	150	175	200	225		14	19	199
Weight without PTO (Kg.Approx)	605	635	670	685		19	14	360
Tractor Power (HP)	40~50	50~60	60~70	70~80	1000	11	22	250

*The weight and working data contained in the present leaflet are supplied for information only and are not binding. Specification and size can be altered as part of ongoing product modification / improvement.



UNIVERSAL SUPER

SINGLE SPEED GEAR DRIVE

Code **BERTSSG**



Single Speed
Gear Box

Universal Super
Boron Steel Blade

Helical
Arrangement
of Blades

Dust Cover
Prevents
Mud Entry



Features & Benefits

- **Highly robust rotary tillers, suitable for most soil conditions. Appropriate for medium to hard soil conditions**
- Prepares the seed bed quickly and economically.
- Gear drive. Single speed gearbox. Compatible with 540 PTO RPM.
- Suitable for use in dry as well as wet land conditions.
- Heavy duty PTO with shear bolt for gearbox overload protection.
- Easily adjust the cutting depth by using the side skid depth adjustment.
- Comes with specially made Universal Super high quality boron steel blades that lasts much longer than other regular rotary tiller blades.
- Available in L and C type blade options.
- Innovative bearing housing and seal design prevents moisture/mud entry which results longer bearing life.
- Dust cover over both side hubs prevents mud entry.

Product Specifications

Description	BERTSSG-125/1030	BERTSSG-150/1036	BERTSSG-175/1042	BERTSSG-200/1048
Gear Box	Single Speed			
No. of Blade	30	36	42	48
No. of Flange	6	7	8	9
Rotor Type	Seamless Pipe			
P.T.O. RPM	540			
Type of Side Drive	Gear			
Side Disc Attachment	Optional			
3-Point Linkage / Category	Cat-I & Cat-II			
Rotor Flange Diameter (mm)	230 (270 Optional)			
Gear Box Over Load Protection	Shear Bolt			
Width of Cut (cm-Approx)	125	150	175	200
Weight without PTO (Kg.Approx)	365	395	425	435
Tractor Power (HP)	35~40	40~45	45~50	50~55
*The weight and working data contained in the present leaflet are supplied for information only and are not binding. Specification and size can be altered as part of ongoing product modification / improvement.				



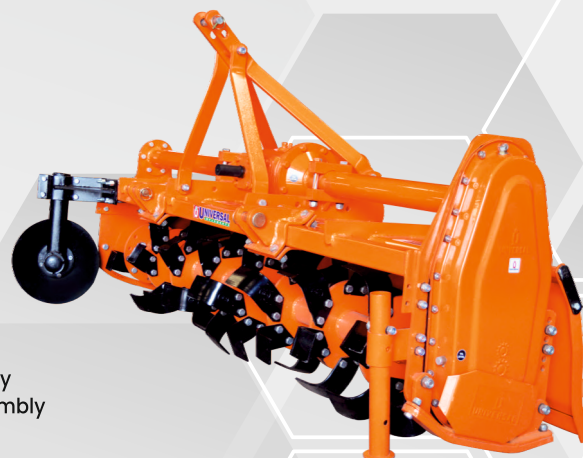
ROTARY TILLERS

UNIVERSAL I M P L E M E N T S

UNIVERSAL SUPER

MULTI SPEED GEAR DRIVE

Code **BERTMSG**



Multi Speed
Gear Box

Universal Super
Boron Steel Blade

Optional Sheet
Type Lift

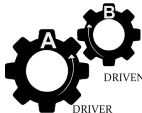
Heavy Duty
Shocker Assembly



Features & Benefits

- **Highly robust rotary tillers, suitable for most soil conditions. Appropriate for medium to hard soil conditions**
- Prepares the seed bed quickly and economically.
- Gear drive, Multi speed gearbox. Compatible with 540 and 1000 PTO RPM.
- Suitable for use in dry as well as wet land conditions also for soft and medium soil conditions.
- Heavy duty PTO with shear bolt for gearbox overload protection.
- Easily adjust the cutting depth by using the side skid depth adjustment.
- Comes with specially made Universal Super high quality Boron Steel Blades that lasts much longer than other regular rotary tiller
- Dust cover over both side hubs prevents mud entry.
- Available in L and C type blade options.
- Innovative bearing housing and seal design prevents moisture/mud entry results longer bearing life.

Product Specifications

Description	BERTMSG-125/2030	BERTMSG-150/2036	BERTMSG-175/2042	BERTMSG-200/2048	BERTMSG-225/2054	BERTMSG-250/2060	BERTMSG-275/2066	GEAR RATIO CHART			
Gear Box	Multi Speed										
No. of Blade	30	36	42	48	54	60	66				
No. of Flange	6	7	8	9	10	11	12				
Rotor Type	Seamless Pipe							P.T.O RPM	A	B	Rotor RPM
P.T.O. RPM	540/1000 (Optional)							540	13	20	142
Type of Side Drive	Gear								20	13	336
Side Disc Attachment	Optional								17	16	232
3-Point Linkage / Category	Cat-I & Cat-II								16	17	205
Rotor Flange Diameter (mm)	230 (270 Optional)								18	15	262
Gear Box Over Load Protection	Shear Bolt								15	18	182
Width of Cut (cm-Approx)	125	150	175	200	225	250	275		14	19	161
Weight without PTO (Kg.Approx)	395	425	455	485	535	565	595		19	14	296
Tractor Power (HP)	35~40	40~45	45~50	50~55	55~65	70~85	75~90	1000	11	22	202
*The weight and working data contained in the present leaflet are supplied for information only and are not binding. Specification and size can be altered as part of ongoing product modification / improvement.											

*The weight and working data contained in the present leaflet are supplied for information only and are not binding. Specification and size can be altered as part of ongoing product modification / improvement.

UNIVERSAL SUPER J-TYPE

MULTI SPEED GEAR DRIVE

Code **BERTMSG-J**

Multi Speed
Gear Box



Universal Super
Boron Steel Blade
(J-Type)



Helical
Arrangement
of Blades



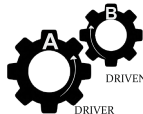
Heavy Duty
Shocker Assembly



Features & Benefits

- **Highly robust rotary tillers, suitable for wet soil conditions. Appropriate for Puddling and Ploughing medium soil conditions**
- Prepares the seed bed quickly and economically.
- Gear drive, Multi speed gearbox. Compatible with 540 and 1000 PTO RPM.
- Suitable for use in dry and wet land conditions.
- Heavy duty PTO with shear bolt for gearbox overload protection.
- Easily adjust the cutting depth by using the side skid depth adjustment.
- Comes with specially made Universal Super high quality boron steel blades that lasts much longer than other regular rotary tiller blades.
- Available in J type blades.
- Innovative bearing housing and seal design prevents moisture/mud entry, which results longer bearing life.
- Dust cover over both side hubs prevents mud entry.

Product Specifications

Description	BERTMSG-125/2030/J-48	BERTMSG-150/2036/J-60	BERTMSG-175/2042/J-72	BERTMSG-200/2048/J-84	BERTMSG-225/2054/J-96	BERTMSG-250/2060/J-108	BERTMSG-275/2066/J-120	GEAR RATIO CHART			
Gear Box	Multi Speed										
No. of Blade	48	60	72	84	96	108	120				
No. of Flange	8	10	12	14	16	18	20				
Rotor Type	Seamless Pipe							P.T.O RPM	A	B	Rotor RPM
P.T.O. RPM	540/1000 (Optional)							540	13	20	142
Type of Side Drive	Gear								20	13	336
Side Disc Attachment	Optional								17	16	232
3-Point Linkage / Category	Cat-I & Cat-II								16	17	205
Rotor Flange Diameter (mm)	250								18	15	262
Gear Box Over Load Protection	Shear Bolt								15	18	182
Width of Cut (cm-Approx)	125	150	175	200	225	250	275		14	19	161
Weight without PTO (Kg.Approx)	440	460	475	525	620	675	740		19	14	296
Tractor Power (HP)	35~40	40~45	45~50	50~55	55~65	70~85	75~90	1000	11	22	202
*The weight and working data contained in the present leaflet are supplied for information only and are not binding. Specification and size can be altered as part of ongoing product modification / improvement.											



UNIVERSAL U-SERIES

MULTI SPEED GEAR DRIVE

Code **BEUMSG**



Multi Speed
Gear Box

Universal Super
Boron Steel Blade

Helical
Arrangement
of Blades

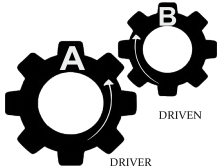
Sheet Type
Linkage



Features & Benefits

- **Fast and Economical Rotary tillers built for cultivated medium soil conditions.**
- Special rotor design and helical blade arrangement puts much less load on the tractor and hence, saves fuel.
- Gear drive, Multi speed gearbox. Compatible with 540 and 1000 PTO RPM.
- Suitable for use in dry as well as wet land conditions also for soft and medium soil conditions.
- Heavy duty PTO with shear bolt for gearbox overload protection.
- Easily adjust the cutting depth by using the side skid depth adjustment.
- Comes with specially made Universal Super high quality boron steel blades that lasts much longer than other regular rotary tiller blades.
- Available in L & C type blade options.
- Innovative bearing housing and seal design prevents moisture / mud entry which results longer bearing life.
- Distinctive implement and gearbox design makes the implement much lighter and thus, puts on minimal load of tractor.

Product Specifications

Description	BEUMSG-145/3042	BEUMSG-165/3048	BEUMSG-185/3054	BEUMSG-205/3060	BEUMSG-225/3066	GEAR RATIO CHART			
Gear Box	Multi Speed								
No. of Blade	42	48	54	60	66				
No. of Flange	8	9	10	11	12				
Rotor Type	Seamless Pipe								
P.T.O. RPM	540/1000 (Optional)								
Type of Side Drive	Gear								
3-Point Linkage / Category	Cat-I & Cat-II					PTO RPM	A	B	Rotor RPM
Pull Type	Mounted					540	16	20	181
Gear Box Over Load Protection	Shear Bolt						20	16	284
Width of Cut (cm-Approx)	145	165	185	205	225		17	19	203
Weight without PTO (Kg.Approx)	390	410	430	450	465		19	17	253
Tractor Power (HP)	30~35	35~45	45~55	55~65	65~75	1000	12	24	210
*The weight and working data contained in the present leaflet are supplied for information only and are not binding. Specification and size can be altered as part of ongoing product modification / improvement.									

*The weight and working data contained in the present leaflet are supplied for information only and are not binding. Specification and size can be altered as part of ongoing product modification / improvement.

UNIVERSAL SPRINTER

SINGLE SPEED GEAR DRIVE

Code **BESPTSSG**

Single Speed
Gear Box



Universal Super
Boron Steel Blade



Helical
Arrangement
of Blades



Dust Cover
Prevents
Mud Entry



Features & Benefits

- **Medium duty Rotary Tillers for fast and economical ploughing.**
- Prepares the seed bed quickly and economically.
- Gear drive, Single speed gearbox Compatible with 540 PTO RPM.
- Suitable for use in dry as well as wet land conditions also for soft and medium conditions.
- Heavy duty PTO with shear bolt for gearbox overload protection.
- Dust cover over both side hubs prevents mud entry.
- Easily adjust the cutting depth by using the side skid depth adjustment.
- Comes with specially made Universal Super high quality Boron Steel Blades that lasts much longer than other regular rotary tiller blades.
- Available in L type blades.
- Innovative bearing housing & seal design prevents the entry of mud/ moisture & gives a much longer bearing life.

Product Specifications

Description	BESPTSSG-125/9030	BESPTSSG-150/9036	BESPTSSG-175/9042	BESPTSSG-200/9048
Gear Box	Single Speed			
No. of Blade	30	36	42	48
No. of Flange	5	6	7	8
Rotor Type	Seamless Pipe			
P.T.O. RPM	540			
Type of Side Drive	Gear			
Side Disc Attachment	Optional			
3-Point Linkage / Category	Cat-I & Cat-II			
Rotor Flange Diameter (mm)	230			
Gear Box Over Load Protection	Shear Bolt			
Width of Cut (cm-Approx)	125	150	175	200
Weight without PTO (Kg.Approx)	315	345	375	405
Tractor Power (HP)	30~35	35~45	45~55	55~65
*The weight and working data contained in the present leaflet are supplied for information only and are not binding. Specification and size can be altered as part of ongoing product modification / improvement.				



UNIVERSAL SPRINTER

MULTI SPEED GEAR DRIVE

Code **BESPRTMSG**

Multi Speed
Gear Box



Universal Super
Boron Steel Blade



Helical
Arrangement
of Blades



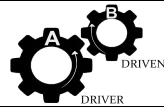
Dust Cover
Prevents
Mud Entry



Features & Benefits

- **Medium duty Rotary Tillers for fast and economical ploughing.**
- Prepares the seed bed quickly and economically.
- Gear drive, Multi speed gearbox. Compatible with 540 and 1000 PTO RPM.
- Suitable for use in dry as well as wet land conditions also for soft and medium soil conditions.
- Heavy duty PTO with shear bolt for gearbox overload protection.
- Dust cover over both side hubs prevents mud entry.
- Easily adjust the cutting depth by using the side skid depth adjustment.
- Comes with specially made Universal Super high quality Boron Steel Blades that lasts much longer than other regular rotary tiller blades.
- Available in L and C type blade options.
- Innovative bearing housing & seal design prevents the entry of mud/ moisture & gives a much longer bearing life.

Product Specifications

Description	BESPRMSG-125/9030	BESPRMSG-150/9036	BESPRMSG-175/9042	BESPRMSG-200/9048	GEAR RATIO CHART			
Gear Box	Multi Speed							
No. of Blade	30	36	42	48				
No. of Flange	5	6	7	8				
Rotor Type	Seamless Pipe				P.T.O RPM	A	B	Rotor RPM
P.T.O. RPM	540/1000 (Optional)				540	13	20	142
Type of Side Drive	Gear					20	13	336
Side Disc Attachment	Optional					17	16	232
3-Point Linkage / Category	Cat-I & Cat-II					16	17	205
Rotor Flange Diameter (mm)	230					18	15	262
Gear Box Over Load Protection	Shear Bolt					15	18	182
Width of Cut (cm-Approx)	125	150	175	200		14	19	161
Weight without PTO (Kg.Approx)	345	370	400	425		19	14	296
Tractor Power (HP)	30~35	35~45	45~55	55~65	1000	11	22	202

*The weight and working data contained in the present leaflet are supplied for information only and are not binding. Specification and size can be altered as part of ongoing product modification / improvement.



UNI LIGHT

SINGLE SPEED GEAR DRIVE

Code **BEULRTSG**

Single Speed
Gear Box



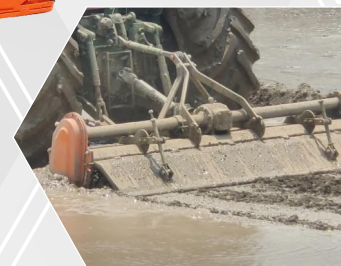
Universal Super
Boron Steel Blade



Helical
Arrangement
of Blades



Optional
PTO Guard



Features & Benefits

- **UNIVERSAL Uni-Light rotary tillers are low weight rotary tillers, highly suitable for wet land puddling for paddy cultivation.**
- Low weight rotary tiller that put minimal load on the tractor and hence ensure better fuel efficiency.
- Fast and economical solution to prepare the seed bed quickly.
- Gear drive, Single speed gearbox Compatible with 540 PTO RPM.
- Suitable for use in both dry and wet land conditions and in soft obstruction free soil conditions.
- Heavy duty PTO with shear bolt for gearbox overload protection.
- Easily adjust the cutting depth by using the side skid depth adjustment.
- Innovative bearing housing & seal design prevents the entry of mud/ moisture & gives a much longer bearing life.
- Available in L and C type blade options.
- Helical blade arrangement ensures uniform load distribution and smooth rotary tiller

Product Specifications

Description	BEULRTSG-100/7030	BEULRTSG-120/7036	BEULRTSG-140/7042	BEULRTSG-160/7048	BEULRTSG-180/7054	BEULRTSG-200/7060	BEULRTSG-220/7066	BEULRTSG-240/7072
Gear Box	Single Speed							
No. of Blade	30	36	42	48	54	60	66	72
No. of Flange	5	6	7	8	9	10	11	12
Rotor Type	Seamless Pipe							
P.T.O. RPM	540							
Type of Side Drive	Gear							
Side Disc Attachment	Optional							
3-Point Linkage / Category	Cat-I & Cat-II							
Rotor Flange Diameter (mm)	185							
Gear Box Over Load Protection	Shear Bolt / Slip Clutch PTO							
Width of Cut (cm-Approx)	100	120	140	160	180	200	220	240
Weight without PTO (Kg.Approx)	235	265	285	295	315	345	365	385
Tractor Power (HP)	20~25	25~30	30~35	35~40	40~45	45~50	50~55	55~60

*The weight and working data contained in the present leaflet are supplied for information only and are not binding. Specification and size can be altered as part of ongoing product modification / improvement.



UNI LIGHT

MULTI SPEED GEAR DRIVE

Code **BEULRTMG**

Multi Speed
Gear Box



Universal Super
Boron Steel Blade



Helical
Arrangement
of Blades



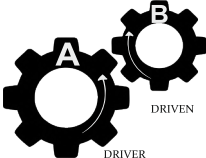
Optional Sheet
Type Lift



Features & Benefits

- **UNIVERSAL Uni-Light rotary tillers are low weight rotary tillers, highly suitable for wet land puddling for paddy cultivation.**
- Low weight rotary tiller that put minimal load on the tractor and hence ensure better fuel efficiency.
- Fast and economical solution to prepare the seed bed quickly.
- Gear drive, Multi speed gearbox. Compatible with 540 and 1000 PTO RPM.
- Suitable for use in both dry and wet land conditions and in soft obstruction free soil conditions.
- Heavy duty PTO with shear bolt for gearbox overload protection.
- Easily adjust the cutting depth by using the side skid depth adjustment.
- Innovative bearing housing & seal design prevents the entry of mud/ moisture & gives a much longer bearing life.
- Available in L and C type blade options.
- Helical blade arrangement ensures uniform load distribution and smooth rotary tiller

Product Specifications

Description	BEULRTMG-100/7030	BEULRTMG-120/7036	BEULRTMG-140/7042	BEULRTMG-160/7048	BEULRTMG-180/7054	BEULRTMSG-200/7060	BEULRTMG-220/7066	BEULRTMG-240/7072	GEAR RATIO CHART			
Gear Box	Multi Speed											
No. of Blade	30	36	42	48	54	60	66	72				
No. of Flange	5	6	7	8	9	10	11	12				
Rotor Type	Seamless Pipe											
P.T.O. RPM	540/1000 (Optional)											
Type of Side Drive	Gear											
Side Disc Attachment	Optional											
3-Point Linkage / Category	Cat-I & Cat-II								PTO RPM	A	B	Rotor RPM
Rotor Flange Diameter (mm)	185								540	16	20	181
Gear Box Over Load Protection	Shear Bolt / Slip Clutch PTO									20	16	284
Width of Cut (cm - Approx)	100	120	140	160	180	200	220	240		17	19	203
Weight without PTO (Kg.Approx)	255	285	305	315	335	365	385	405	1000	19	17	253
Tractor Power (HP)	20~25	25~30	30~35	35~40	40~45	45~50	50~55	55~60		12	24	210
*The weight and working data contained in the present leaflet are supplied for information only and are not binding. Specification and size can be altered as part of ongoing product modification / improvement.												

*The weight and working data contained in the present leaflet are supplied for information only and are not binding. Specification and size can be altered as part of ongoing product modification / improvement.

UNI LIGHT J-TYPE SINGLE SPEED GEAR DRIVE Code **BEULRTSG-J**

Single Speed
Gear Box



Universal Super
Boron Steel Blade
(J-Type)



Helical
Arrangement
of Blades



Light Weight
Construction



Features & Benefits

- **UNIVERSAL Uni-Light J-type rotary tillers are low weight rotary tillers that put minimal load on the tractor and hence ensure better fuel efficiency.**
- Highly suitable for wet land puddling for paddy cultivation.
- Fast and economical solution to prepare the seed bed quickly.
- Gear drive, Single speed gearbox Compatible with 540 PTO RPM.
- Suitable for use wet land conditions and in soft obstruction free soil conditions.
- Heavy duty PTO with shear bolt for gearbox overload protection.
- Easily adjust the cutting depth by using the side skid depth adjustment.
- Innovative bearing housing & seal design prevents the entry of mud/ moisture & gives a much longer bearing life.
- Available in J type blades.
- Helical blade arrangement ensures uniform load distribution and smooth rotary tiller operation.

Product Specifications

Description	BEULRTSG-120/7044-J	BEULRTSG-140/7052-J	BEULRTSG-160/7060-J	BEULRTSG-180/7068-J	BEULRTSG-200/7076-J	BEULRTSG-220/7084-J	BEULRTSG-240/7092-J
Gear Box	Single Speed						
No. of Blade	44	52	60	68	76	84	92
No. of Blade Mountings	44	52	60	68	76	84	92
Rotor Type	Seamless Pipe						
Type of Blade	J- Blade						
P.T.O. RPM	540						
Type of Side Drive	Gear						
Side Disc Attachment	Optional						
3-Point Linkage / Category	Cat-I & Cat-II						
Gear Box Over Load Protection	Shear Bolt / Slip Clutch PTO						
Width of Cut (cm- Approx)	120	140	160	180	200	220	240
Weight without PTO (Kg.Approx)	245	260	280	310	330	360	380
Tractor Power (HP)	25~30	30~35	35~40	40~45	45~50	50~55	55~60

*The weight and working data contained in the present leaflet are supplied for information only and are not binding. Specification and size can be altered as part of ongoing product modification / improvement.



UNI LIGHT J-TYPE MULTI SPEED GEAR DRIVE Code **BEULRTMG-J**

Multi Speed
Gear Box



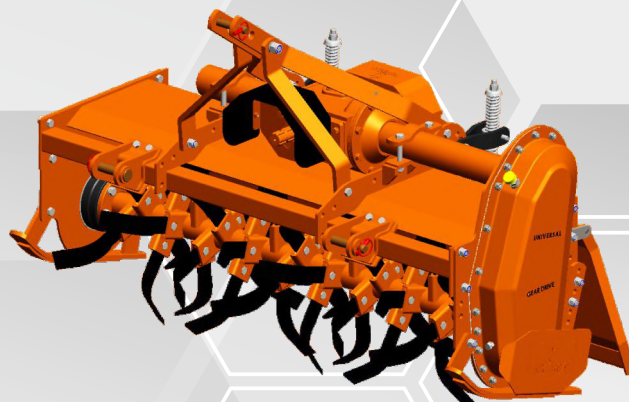
Universal Super
Boron Steel Blade
(J-Type)



Helical
Arrangement
of Blades



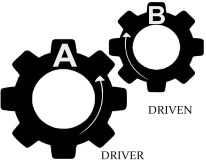
Light Weight
Construction



Features & Benefits

- **UNIVERSAL Uni-Light J-type rotary tillers are low weight rotary tillers that put minimal load on the tractor and hence ensure better fuel efficiency.**
- Highly suitable for wet land puddling for paddy cultivation.
- Fast and economical solution to prepare the seed bed quickly.
- Gear drive, Multi speed gearbox. Compatible with 540 and 1000 PTO RPM.
- Suitable for use wet land conditions and in soft obstruction free soil conditions.
- Heavy duty PTO with shear bolt for gearbox overload protection.
- Easily adjust the cutting depth by using the side skid depth adjustment.
- Innovative bearing housing & seal design prevents the entry of mud/ moisture & gives a much longer bearing life.
- Available in J type blades.
- Helical blade arrangement ensures uniform load distribution and smooth rotary tiller operation.

Product Specifications

Description	BEULRTMG-120/7044-J	BEULRTMG-140/7052-J	BEULRTMG-160/7060-J	BEULRTMG-180/7068-J	BEULRTMG-200/7076-J	BEULRTMG-220/7084-J	BEULRTMG-240/7092-J	GEAR RATIO CHART			
Gear Box	Multi Speed										
No. of Blade	44	52	60	68	76	84	92				
No. of Blade Mountings	44	52	60	68	76	84	92				
Rotor Type	Seamless Pipe										
Type of Blade	J- Blade										
P.T.O. RPM	540/1000										
Type of Side Drive	Gear										
Side Disc Attachment	Optional							P.T.O RPM	A	B	Rotor RPM
3-Point Linkage / Category	Cat-I & Cat-II							540	16	20	181
Gear Box Over Load Protection	Shear Bolt / Slip Clutch PTO								20	16	284
Width of Cut (cm- Approx)	120	140	160	180	200	220	240		17	19	203
Weight without PTO (Kg.Approx)	265	280	300	330	350	380	400		19	17	253
Tractor Power (HP)	25~30	30~35	35~40	40~45	45~50	50~55	55~60	1000	12	24	210
*The weight and working data contained in the present leaflet are supplied for information only and are not binding. Specification and size can be altered as part of ongoing product modification / improvement.											

*The weight and working data contained in the present leaflet are supplied for information only and are not binding. Specification and size can be altered as part of ongoing product modification / improvement.



UNIVERSAL MINI SERIES

SINGLE SPEED GEAR DRIVE

Code **BEMRTSSG**

Single Speed
Gear Box

Universal Super
Boron Steel Blade

PTO Shaft
with Overload
Protection

Heavy Duty
Shocker
Assembly



Features & Benefits

- Most appropriate tillage equipment for fruits and vegetables growers, rice growers, hobby farmers, landscapers, nurseries, vineyards, green house farmers and gardeners.
- Fast and economical solution for your tillage needs.
- Gear drive, Single speed gearbox Compatible with 540 PTO RPM.
- Perfect match to compact narrow tractors to use under overhanging branches or orchards.
- Suitable for use in dry as well as wet land conditions.
- Heavy duty PTO with shear bolt for gearbox overload protection.
- Easily adjust the cutting depth by using the side skid depth adjustment.
- Comes with specially made Universal Super high quality Boron Steel Blades that lasts much longer than other regular rotary tiller blades.
- Suitable for dry and wet land application in combination with mini light weight tractors.

Product Specifications

Description	BEMRTSSG-80/4016	BEMRTSSG-100/4020	BEMRTSSG-120/4024	BEMRTSSG-140/4028
Gear Box	Single Speed			
No. of Blade	16	20	24	28
No. of Flange	4	5	6	7
Rotor Type	Seamless Pipe			
P.T.O. RPM	540			
Type of Side Drive	Gear			
3-Point Linkage / Category	Cat-I & Cat-II			
Gear Box Over Load Protection	Shear Bolt			
Width of Cut (cm-Approx)	80	100	120	140
Weight without PTO (Kg.Approx)	230	250	270	290
Tractor Power (HP)	15~20	20~25	25~30	30~35

*The weight and working data contained in the present leaflet are supplied for information only and are not binding. Specification and size can be altered as part of ongoing product modification / improvement.



ROTARY TILLERS

UNIVERSAL I M P L E M E N T S

UNIVERSAL MINI SERIES

MULTI SPEED GEAR DRIVE

Code **BEMRTMSG**

Multi Speed
Gear Box

Universal Super
Boron Steel Blade

PTO Shaft
with Overload
Protection

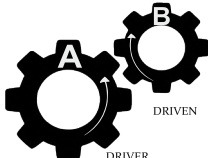
Heavy Duty
Shocker
Assembly



Features & Benefits

- Most appropriate tillage equipment for fruits and vegetables growers, rice growers, hobby farmers, landscapers, nurseries, vineyards, green house farmers and gardeners.
- Fast and economical solution for your tillage needs.
- Gear drive, Multi speed gearbox. Compatible with 540 and 1000 PTO RPM.
- Perfect match to compact narrow tractors to use under overhanging branches or orchards.
- Suitable for use in dry as well as wet land conditions.
- Heavy duty PTO with shear bolt for gearbox overload protection.
- Easily adjust the cutting depth by using the side skid depth adjustment.
- Comes with specially made Universal Super high quality Boron Steel Blades that lasts much longer than other regular rotary tiller blades.
- Suitable for dry and wet land application in combination with mini light weight tractors.

Product Specifications

Description	BEMRTMSG-100/4020	BEMRTMSG-120/4024	BEMRTMSG-140/4028	GEAR RATIO CHART			
Gear Box	Multi Speed						
No. of Blade	20	24	28				
No. of Flange	5	6	7				
Rotor Type	Seamless Pipe						
P.T.O. RPM	540 / 1000						
Type of Side Drive	Gear			P.T.O RPM	A	B	Rotor RPM
3-Point Linkage / Category	Cat-I & Cat-II			540	16	20	181
Gear Box Over Load Protection	Shear Bolt				20	16	284
Width of Cut (cm-Approx)	100	120	140		17	19	203
Weight without PTO (Kg.Approx)	275	290	315		19	17	253
Tractor Power (HP)	20~25	25~30	30~35	1000	12	24	210
*The weight and working data contained in the present leaflet are supplied for information only and are not binding. Specification and size can be altered as part of ongoing product modification / improvement.							



ROTARY TILLERS

UNIVERSAL I M P L E M E N T S

UNIVERSAL ECO SMART

MULTI SPEED GEAR DRIVE

Code **BEERTMSG**



Multi Speed
Gear Box



PTO Shaft
with Overload
Protection



Helical
Arrangement
of Blades



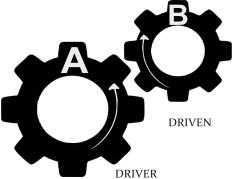
Light weight
Construction



Features & Benefits

- **UNIVERSAL Eco-Smart rotary tillers are low weight rotary tillers that put minimal load on the tractor and hence ensure better fuel efficiency.**
- Fast and economical solution to prepare the seed bed quickly.
- Suitable for use in both dry and wet land conditions and in soft/medium obstruction free soil conditions.
- Gear drive. Multi speed gear box. Compatible with 540 and 1000 PTO RPM.
- Easily adjust the cutting depth by using the side skid depth adjustment.
- Innovative bearing housing & seal design prevents the entry of mud/ moisture & gives a much longer bearing life.
- Available in L type blades.
- Helical blade arrangement ensures uniform load distribution and smooth rotary tiller operation.
- Heavy duty PTO with shear bolt for gearbox overload protection.

Product Specifications

Description	BEERTMSG-150/5036	BEERTMSG-175/5042	BEERTMSG-200/5048	GEAR RATIO CHART			
Gear Box	Multi Speed						
No. of Blade	36	42	48				
No. of Flange	6	7	8				
Rotor Type	Seamless Pipe						
P.T.O. RPM	540/1000 (Optional)						
Type of Side Drive	Gear			P.T.O RPM	A	B	Rotor RPM
3-Point Linkage / Category	Cat-I & Cat-II			540	16	20	181
Gear Box Over Load Protection	Shear Bolt				20	16	284
Width of Cut (cm-Approx)	150	175	200		17	19	203
Weight without PTO (Kg.Approx)	325	350	380		19	17	253
Tractor Power (HP)	25~30	35~40	45~50	1000	12	24	210
*The weight and working data contained in the present leaflet are supplied for information only and are not binding. Specification and size can be altered as part of ongoing product modification / improvement.							

*The weight and working data contained in the present leaflet are supplied for information only and are not binding. Specification and size can be altered as part of ongoing product modification / improvement.

UNIVERSAL ROTO-PUDDLER

SINGLE SPEED GEAR DRIVE

Code **BERPSSG**

Single Speed
Gear Box

Universal Super
Boron Steel Blade
(J-Type)

Side extension
levelling board

Heavy Duty
Shocker
Assembly



Features & Benefits

- **Universal Roto Puddler is a specially designed low weight implement, highly suitable for wet land puddling for paddy cultivation.**
- Puts minimum load on tractor and hence ensure better fuel efficiency.
- Suitable for wet land condition for fast and economical puddling.
- Gear drive, Single speed gearbox Compatible with 540 PTO RPM.
- J-type blades helical arrangement to ensure uniform load distribution and smooth puddling.
- Side extension levelling board to cover width of levelling. Folding option to cover corners and ease of transportation.
- Heavy duty PTO with shear bolt for gearbox overload protection.
- Easily adjust the cutting depth by using the side skid depth adjustment.
- Comes with specially made Universal Super high quality boron steel blades that last much longer than other regular rotary tiller blades.
- Specially designed levelling board to uniformly level the puddled soil.

Product Specifications

Description	BERPSSG-200/1176	BERPSSG-220/1184	BERPSSG-240/1192
Gear Box	Single Speed		
No. of Blade	76	84	92
No. of Blade Mountings	76	84	92
Type of Blade	J - Type		
Rotor Type	Seamless Pipe		
P.T.O. RPM	540		
Type of Side Drive	Gear		
Side Disc Attachment	Optional		
3-Point Linkage / Category	Cat-I & Cat-II		
Gear Box Over Load Protection	Shear Bolt		
Width of Cut (cm-Approx)	200	220	240
Weight without PTO (Kg.Approx)	360	390	420
Tractor Power (HP)	45~50	50~55	55~60

*The weight and working data contained in the present leaflet are supplied for information only and are not binding. Specification and size can be altered as part of ongoing product modification / improvement.



GROW WITH US

UNIVERSAL[®]

IMPLEMENT S



- MOUNTED DISC PLOUGH
- UNIVERSAL DISC PLOUGH
- STANDARD DISC PLOUGH
- REVERSIBLE DISC PLOUGH
- LIGHT DUTY DISC PLOUGH

- MOULD BOARD PLOUGH
- UNIVERSAL SUPER MB PLOUGH
- REVERSIBLE MB PLOUGH
- MINI SERIES MB PLOUGH

UNIVERSAL PLOUGHS



MOUNTED DISC PLOUGH Code BEMDP

Heavy Duty
Spindle Assy.



Heavy Duty
Colter
with Shocker



Heavy Duty
Drawbar



More Flexible
Scraper



Features & Benefits

- **Mounted Disc Ploughs are well designed to work in all types of soils & can be used easily in hard soils & in rocky & rooted areas.**
- Mounted Disc Ploughs can handle the toughest ploughing jobs with ease
- Compatible with a variety of tractors.
- An adjustable and spring-loaded furrow wheel/coulter disc takes care of the side draft and makes sure that the implement moves smoothly.
- Coulter Disc & Shocker assembly keeps the Plough perfectly aligned.
- Available with the option of high quality Universal Boron steel discs that last much longer than regular steel discs.
- Heavy duty pipe frame with high ground clearance makes it easy for the plough to work in fields with a lot of crop residue.
- Especially useful in hard and dry trashy land, stony soil conditions and in soils where scouring is a major problem.
- Highly adjustable disc penetration & disc position angle for use in tough and soft soil.
- Available in 2, 3, 4 & 5 bottom configurations.

Product Specifications

Description	BEMDP-2	BEMDP-3	BEMDP-4(3+1)	BEMDP-5(4+1)
Frame (mm)	Tubular Frame (Seamless Pipe O.D. 168) (10~12 Thickness)			
Axle Type	Forged Spindle CNC Machined			
No. of Disc	2	3	4	5
Type of Disc / Blade	Boron Steel / High Carbon Steel			
Disc Diameter (mm)	660, 710 & Thickness 5~8			
Disc Spacing (mm)	570 (23" Approx.)			
Bearing Hubs	2	3	4	5
3-Point Linkage/Category	Cat-II			
Width of Cut (cm-Approx)	500~550	875~925	1150~1200	1575~1625
Weight (Kg.Approx) (with 660X6mm Discs)	315	415	530	645
Tractor Power (HP)	50~60	65~80	85~100	105~125

*The weight and working data contained in the present leaflet are supplied for information only and are not binding. Specification and size can be altered as part of ongoing product modification / improvement.



UNIVERSAL

DISC PLOUGH
Code **BEUDP**

Heavy Duty
Spindle Assy.



Heavy Duty
Coulter
with Shocker



Heavy Duty
Square Pipe
Frame



More Flexible
Scraper



Features & Benefits

- Universal Disc Plough are well designed to work in all types of soils & can be used easily in hard soils & in rocky & rooted areas.
- Universal Disc Ploughs can handle the toughest ploughing jobs with ease.
- Compatible with a variety of tractors..
- An adjustable and spring-loaded furrow wheel/coulter disc takes care of the side draft and makes sure that the implements moves smoothly.
- Available with the option of high quality Universal Boron steel discs that last much longer than regular steel discs.
- Heavy duty square pipe frame with high ground clearance makes it easy for the plough to work in fields with a lot of crop residue.
- Highly adjustable disc penetration & disc position angle for use in tough and soft soil.
- Available in 2 & 3 bottom configurations.
- Coulter Disc & Shocker assembly keeps the Plough perfectly aligned.

Product Specifications

Description	BEUDP-2	BEUDP-3
Frame (mm)	150x150x6 Square pipe, 6mm sheet	
Axle Type	Forged Spindle CNC Machined	
No. of Disc	2	3
Type of Disc / Blade	Boron Steel / High Carbon Steel	
Disc Diameter (mm)	610 & 660, Thickness 4~6	
Disc Spacing (mm)	570 (23" Approx.)	
Bearing Hubs	2	3
3-Point Linkage/Category	Cat-II	
Width of Cut (mm Approx.)	500~550	875~925
Weight (Kg.Approx) (with 660X6mm Discs)	265	340
Tractor Power (HP)	40~55	55~75

*The weight and working data contained in the present leaflet are supplied for information only and are not binding. Specification and size can be altered as part of ongoing product modification / improvement.



STANDARD DISC PLOUGH Code BESMDP

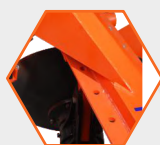
Heavy Duty
Spindle Assy.



Heavy Duty
Colter
with Shocker



Adjustable Disc
spacing



Moveable Weight
for Improved
Penetration



Features & Benefits

- **Standard Disc Ploughs are well designed to work in all types of soils & can be use easily in hard soils & in rocky & rooted areas.**
- Standard Disc Ploughs can handle the toughest ploughing jobs with ease.
- Compatible with a variety of tractors (45 to 75 HP).
- An adjustable and spring-loaded furrow wheel/coulter disc takes care of the side draft and makes sure that the implements moves smoothly.
- Coulter Disc & Shocker assembly keeps the Plough perfectly aligned.
- Horizontally adjustable disc spacing.
- Highly adjustable disc hubs to change disc penetration & disc position angle.
- Available with the option of high quality Universal Boron steel & high carbon steel discs.
- Available in 2 & 3 bottom configurations.
- Moveable extra weight for improved penetration & stability.

Product Specifications

Description	BESMDP-2	BESMDP-3
Frame (mm)	100x50 Channel, 200x12 Flat	
Axle Type	Forged Spindle CNC Machined	
No. of Disc	2	3
Type of Disc / Blade	Boron Steel / High Carbon Steel	
Disc Diameter (mm)	610 & 660, Thickness 4~6	
Disc Spacing (mm)	570 (23" Approx.) Adjustable	
Bearing Hubs	2	3
3-Point Linkage/Category	Cat-II	
Width of Cut (mm Approx)	500~550	875~925
Weight (Kg.Approx) (with 660X6mm Discs)	315	415
Tractor Power (HP)	45~55	65~75

*The weight and working data contained in the present leaflet are supplied for information only and are not binding. Specification and size can be altered as part of ongoing product modification / improvement.



REVERSIBLE MOUNTED

DISC PLOUGH

Code **BERMDP**



Heavy Duty
Box Frame

Heavy Duty
Spindle Assy.

Adjustable
Coulter Wheel

Hydraulic
Turnover
Mechanism



Features & Benefits

- **Universal Reversible Mounted Disc Plough are equipped with strong hydraulic turnover mechanism that ensures a smooth plough turning action & Self disc angle adjustment.**
- Universal Reversible Mounted Disc Plough are well designed to work with all type of soils & can be handle the toughest ploughing jobs with ease
- Compatible with a variety of tractors.
- An adjustable and spring-loaded furrow wheel/coulter disc takes care of the side draft and makes sure that the implement moves smoothly.
- Highly adjustable disc penetration & disc position angle for use in medium and soft soil.
- Available with the option of high quality Universal Boron steel discs that last much longer than regular steel discs.
- Available in 2, 3 & 4 bottom configurations with detachable legs.

Product Specifications

Description	BERMDP-2	BERMDP-3	BERMDP-4
Frame (mm)	Heavy Duty Box Frame with Detachable Legs(Laser Fabricated)		
Axle Type	Forged Spindle CNC Machined		
No. of Disc	2	3	4
Type of Disc / Blade	Boron Steel / High Carbon Steel		
Disc Diameter (mm)	660x6 Thickness		
Disc Spacing (mm)	610		
Bearing Hubs	2	3	4
3-Point Linkage/Category	Cat-II		
Width of Cut (mm Approx)	600~700	900~1000	1100~1200
Weight (Kg.Approx) (with 660X6mm Discs)	520	670	740
Tractor Power (HP)	50~60	65~80	85~100

*The weight and working data contained in the present leaflet are supplied for information only and are not binding. Specification and size can be altered as part of ongoing product modification / improvement.



LIGHT DUTY DISC PLOUGH Code **BELDDP**

Light Weight
Construction

Forged Spindle

Adjustable Disc
spacing

Flexible
Drawbar Angle



Features & Benefits

- Universal Light duty disc plough are well designed to work in wet paddy fields & sandy soil areas.
- Compatible with 25 to 40 HP tractors.
- An adjustable and spring-loaded furrow wheel/coulter disc takes care of the side draft and makes sure that the implements moves smoothly.
- Available with the option of high quality Universal Boron steel that last much longer than regular steel discs.
- Easily adjustable disc spacing.
- Highly adjustable disc penetration & disc position angle for use in medium and soft soil.
- Available with the option of high quality Universal Boron steel & high carbon steel discs.
- Available in 2 & 3 bottom configurations.
- Coulter Disc & Shocker assembly keeps the Plough perfectly aligned.
- Flexible drawbar angle to adjust cutting angle.

Product Specifications

Description	BELDDP-2	BELDDP-3
Frame (mm)	Angle Box Frame 65x65x8 & 60x60x6 Square Pipe	
Axle Type	Forged Spindle CNC Machined	
No. of Disc	2	3
Type of Disc / Blade	Boron Steel / High Carbon Steel	
Disc Diameter (mm)	560 & 610 Thickness 3~4.5 mm	
Disc Spacing (mm)	500~570 (22" Approx) Adjustable	
Bearing Hubs	2	3
3-Point Linkage/Category	Cat-I & Cat-II	
Width of Cut (mm Approx)	500~550	875~925
Weight (Kg.Approx) (with 610X4.5mm Discs)	190	235
Tractor Power (HP)	25~30	35~40

*The weight and working data contained in the present leaflet are supplied for information only and are not binding. Specification and size can be altered as part of ongoing product modification / improvement.



MOULD BOARD

PLOUGH

Code **BEMBP**

Perfect Mould
Board Fitting

Heavy Duty
Single Piece
Profile Cut Tynes

Heavy Duty
Square Drawbar

High Quality Blade
and Bar Point



Features & Benefits

- **Universal Mould Board Ploughs are designed to work in most types of soils and can be used easily in hard soils and cultivated/harvested areas**
- Universal MB Ploughs can handle the toughest ploughing jobs with ease.
- Compatible with a variety of tractors.
- Equipped with special wear-resistant alloy steel blades and Boron steel bar points.
- Heavy duty frame with high ground clearance makes it easy for the plough to work in fields with a lot of harvested crop residue.
- Mould Board extension can be provided for a better control of slice when extra deep ploughing is required.
- Available in 2, 3 & 4 bottom configurations.
- The high quality bar points can be moved in their slot for complete utilization.

Product Specifications

Description	BEMBP-2	BEMBP-3	BEMBP-4
Frame (mm)	72X72X6 Square Tube / 80x80x6 Square Tube		
Tynes (mm)	Fabricated one piece 36 / 40 mm (optional)		
No. of Tynes & Furrow	2	3	4
Bar Point (mm)	Boron Steel 32 / 40 Solid Square		
Mould Board Furrow	8 mm		
3-Point Linkage / Category	Cat-I & Cat-II		
Length (mm Approx)	1320	1880	2440
Width (mm Approx)	1110	1270	1430
Height (mm Approx)	1160		
Width of Cut (mm Approx)	610	910	1210
Weight (Kg.Approx)	235	345	455
Tractor Power (HP)	35~50	50~70	75~90

*The weight and working data contained in the present leaflet are supplied for information only and are not binding. Specification and size can be altered as part of ongoing product modification / improvement.



UNIVERSAL SUPER

MB PLOUGH

Code **BEUSMBP**

Perfect Mould
Board Fitting

Heavy Duty
Profile Cut Tynes

Shear Bolt
Protection

High Quality Blade
and Bar Point



Features & Benefits

- Universal Super Mould Board ploughs are equipped with Shear bolt protection to prevent any damage to the tynes or plough frame if the mould board hits a rock or hard root in the field.
- Universal Super Mould Board Ploughs are designed to work in most types of soils and can be used easily in hard soils and in cultivated/harvested areas
- Universal MB Ploughs can handle the toughest ploughing jobs with ease.
- Compatible with a variety of tractors.
- The high quality bar points can be moved in their slot for complete utilization.
- Heavy duty frame with high ground clearance makes it easy for the plough to work in fields with a lot of crop residue.
- Mould Board extension can be provided for a better control of slice when extra deep ploughing is required.
- Available in 2, 3, 4 & 5 bottom configurations.
- Equipped with special wear-resistant alloy steel blades and Boron steel bar points.

Product Specifications

Description	BEUSMBP-2	BEUSMBP-3	BEUSMBP-4	BEUSMBP-5
Frame (mm)	80x80x6 Square Tube & 100x25 Flat			100x100x6 Square Tube & 100x25 Flat
Tynes (mm)	Fabricated 25mm			
No. of Tynes & Furrow	2	3	4	5
Bar Point (mm)	Boron Steel 40 Solid Square			
Mould Board Furrow	8 mm			
3-Point Linkage / Category	Cat-I & Cat-II			
Length (mm Approx)	1320	1880	2440	3000
Width (mm Approx)	1110	1270	1430	1590
Height (mm Approx)	1240			
Width of Cut (mm Approx)	610	910	1210	1510
Weight (Kg.Approx)	250	370	505	650
Tractor Power (HP)	35~50	50~70	75~90	95~120

*The weight and working data contained in the present leaflet are supplied for information only and are not binding. Specification and size can be altered as part of ongoing product modification / improvement.



REVERSIBLE MB PLOUGH Code **BERMBP**

Heavy Duty
Drawbar



Heavy Duty
Frame



Strong Turnover
Axle



High Quality Blade
and Bar Point



Features & Benefits

- **Universal Reversible MB Ploughs are perfectly designed to break and turn the soil and can be used in all type of soil.**
- Universal MB Ploughs can handle the toughest ploughing jobs with ease.
- The strong turnover axle can withstand high loads easily and ensures a long product life.
- The plough angle can be adjusted using the easy draw bar adjustment.
- Heavy duty frame with high ground clearance makes it easy for the plough to work in fields with a lot of crop residue.
- Equipped with special wear resistant alloy steel blades and bar points.
- The high quality bar points can be moved in their slot for complete utilization.
- The hydraulic turnover mechanism ensures a smooth plough turning action

Product Specifications

Description	BERMBP-2	BERMBP-3
No. of Furrow	2	3
Frame	Fabricated Frame (100x20 Flat)	
Tyne (mm)	Fabricated 40 (T)	
Mould Board (mm)	8 (T)	
Plough Shear (mm)	10~12 (T)	
Bar Point (mm)	40x40 & 40x20 (High Carbon / Boron Steel)	
Head Stock Bearing	Needle Bearing	
3-Point Linkage / Category	Cat-II	
Turnover Mechanism	Hydraulic	
Width of Cut (mm Approx)	700	1050
Depth of Cut (mm)	300~360	
Weight (Kg. Approx)	410	515
Tractor Power (HP)	45~65	65~90

*The weight and working data contained in the present leaflet are supplied for information only and are not binding. Specification and size can be altered as part of ongoing product modification / improvement.



MINI SERIES

MB PLOUGH

Code **BEMMBP** **BEMHMBP**

Perfect Mould
Board Fitting

Heavy Duty
Single Piece
Profile Cut Tynes

Heavy Duty
Square Drawbar

High Quality Blade
and Bar Point



Features & Benefits

- **Universal Mini-Series Mould Board Ploughs are Perfect match for compact narrow tractors to use under over hanging branches of orchards, nurseries, green houses, etc**
- Designed to work in medium or sandy soil.
- Equipped with special wear-resistant alloy steel blades and Boron steel bar points.
- The high quality bar points can be moved in their slot for complete utilization.
- Compatible with a variety of small tractors.
- Available in 2 & 3 bottom configurations.
- Highly suitable for fruits and vegetable growers, hobby farmers, nurseries, vineyards, green house farmers and gardeners.

Product Specifications

Mini-Series M.B. Plough

Mini-Series Medium Height M.B. Plough

Description	BEMMBP-2	BEMMBP-3	BEMHMBP-2	BEMHMBP-3
Frame (mm)	C-Type Frame 75x20 T			
Tynes (mm)	Fabricated one piece 25 T			
No. of Tynes & Furrow	2	3	2	3
Bar Point (mm)	Boron Steel 32 Solid Square			
Mould Board Furrow	8 mm			
3-Point Linkage / Category	Cat-I			
Length (mm Approx)	1180	1730	1180	1730
Width (mm Approx)	720	1080	720	1080
Height (mm Approx)	830		930	
Width of Cut (mm Approx)	450	675	450	675
Weight (Kg.Approx)	115	210	125	225
Tractor Power (HP)	20~25	30~35	20~25	30~35

*The weight and working data contained in the present leaflet are supplied for information only and are not binding. Specification and size can be altered as part of ongoing product modification / improvement.



- **HEAVY DUTY HYDRAULIC HARROW**
- **MEDIUM DUTY HYDRAULIC HARROW**
- **COMPACT MODEL DISC HARROW**
- **U-SERIES MOUNTED OFFSET DISC HARROW**
- **MOUNTED OFFSET DISC HARROW**
- **MOUNTED TANDEM DISC HARROW**
- **POLY DISC HARROW**
- **TRAILED OFFSET DISC HARROW**
- **UP MODEL DISC HARROW**

UNIVERSAL HARROWS

HEAVY DUTY HYDRAULIC

DISC HARROW

Code **BEHDHH**

Perfect Tyre
Locking System



Gang Angle
Lock



Heavy Duty
Square
Tube Frame



Leaf Spring &
Tyre Assembly
for Smooth
Transportation



Features & Benefits

- **Universal Heavy Duty Hydraulic Disc Harrows are high performance, Heavy weight harrows designed to work easily in toughest operating conditions.**
- Easy to transport on the tires using the hydraulic system.
- Can be used for both, surface disc harrowing (superficial ploughing) and intensive deep ploughing.
- Used in open field working for shattering of clods, preparation of soil for sowing and burial of organic substances and crop residue.
- Available with the options of high carbon steel discs and high quality boron steel discs with 46-50 HRC hardness.
- The long lasting and reliable tires and hydraulic mechanism enable the operator to control the cut depth and facilitate in easy transportation.
- High quality bearings and hubs ensure smooth operation and put minimal load on the tractor.
- High quality seals prevent the entry of mud and water into the bearings and hubs.

Product Specifications

Description	BEHDHH-18	BEHDHH-20	BEHDHH-22	BEHDHH-24	BEHDHH-28	BEHDHH-32
Frame (mm)	Square Tube 132x132x6 & 100x100x6 T					
Gang Bolt/ Axle Type (mm)	Solid Square 40 (Rod)					
No. of Disc	18	20	22	24	28	32
Type of Disc / Blade	Boron Steel / High Carbon Steel and Plain Rear / Front Notched Disc (Optional)					
Disc Diameter (mm)	610, 660 & Thickness 4~6					
Disc Spacing (mm)	228 (9")					
Bearing Hubs	6	8				
Pull Type	Trailed					
Tyre Size	10.0/75-15.3 (8 to 16 PR)					
Gang Angle Adjustment	Manual					
Width of Cut (mm)	2100	2300	2500	2700	3100	3500
Weight (Kg.Approx) (with 660X6mm Discs)	1530	1620	1750	1835	2005	2160
Tractor Power (HP)	65~75	80~90	90~110	115~135	140~165	170~190

*The weight and working data contained in the present leaflet are supplied for information only and are not binding. Specification and size can be altered as part of ongoing product modification / improvement.

MEDIUM DUTY HYDRAULIC

DISC HARROW

Code **BEMDHH**

Perfect Tyre
Locking System



Gang Angle
Lock



Heavy Duty
Square
Tube Frame



Leaf Spring &
Tyre Assembly
for Smooth
Transportation



Features & Benefits

- **Universal Medium Duty Hydraulic Disc Harrows are high performance, Heavy weight harrows designed to work easily in toughest operating conditions.**
- Easy to transport on the tires using the hydraulic system.
- Can be used for both, surface disc harrowing (superficial ploughing) and intensive deep ploughing.
- Used in open field working for shattering of clods, preparation of soil for sowing and burial of organic substances and crop residue.
- Available with the options of high carbon steel discs and high quality boron steel discs with 46-50 HRC hardness.
- The long lasting and reliable tires and hydraulic mechanism enable the operator to control the cut depth and facilitate in easy transportation.
- High quality bearings and hubs ensure smooth operation and put minimal load on the tractor.
- High quality seals prevent the entry of mud and water into the bearings and hubs.

Product Specifications

Description	BEMDHH-14	BEMDHH-16	BEMDHH-18
Frame (mm)	Square Tube 100x100x6 T		
Gang Bolt/ Axle Type (mm)	Solid Square 40 (Rod)		
No. of Disc	14	16	18
Type of Disc / Blade	Boron Steel / High Carbon Steel and Plain Rear / Front Notched Disc (Optional)		
Disc Diameter (mm)	610, 660 & Thickness 4~6		
Disc Spacing (mm)	228 (9")		
Bearing Hubs	4	6	
Pull Type	Trailed		
Tyre Size	10.0/75-15.3 (8 to 16 PR)		
Gang Angle Adjustment	Manual		
Width of Cut (mm)	1700	1900	2100
Weight (Kg.Approx) (with 660X6mm Discs)	1150	1265	1470
Tractor Power (HP)	50~65	65~75	80~90

*The weight and working data contained in the present leaflet are supplied for information only and are not binding. Specification and size can be altered as part of ongoing product modification / improvement.

COMPACT MODEL

DISC HARROW

Code **BECMDHSA**

Highly Adjustable
Drawbar

Gang Angle
Adjustable

Long Life
Bearing Hub

Combination of
Plain and
Notched Disc



Features & Benefits

- **Universal Compact Model Disc Harrow can be used in both Mounted and trailed configurations depending on user needs.**
- Heavily weighted gangs provide excellent stability.
- Can be used for both, surface disc harrowing (superficial ploughing) and intensive deep ploughing.
- High quality seals prevent the entry of mud and water into the bearings and hubs.
- Compatible with a variety of tractors.
- Easy gang adjustment to change the cutting depth and to get the perfect level finish.
- Available with the options of high carbon steel discs & high quality boron steel discs with 46~50 HRC hardness
- Used in open field working for shattering of clods, preparation of soil for sowing and burial of organic substances and crop residue.
- High Quality bearing and hubs ensure smooth operation and put minimal load on the tractor

Product Specifications

Description	BECMDHSA-16	BECMDHSA-18	BECMDHSA-20	BECMDHSA-22	BECMDHSA-24
Frame (mm)	Square Tube 100x100x6 & 80x80x6 T				
Gang Bolt/ Axle Type (mm)	Solid Square 32 (Rod)				
No. of Disc	16	18	20	22	24
Type of Disc / Blade	Boron Steel / High Carbon Steel and Plain / Notched Disc (Optional)				
Disc Diameter (mm)	560,610,& 660 Thickness 4~6				
Disc Spacing (mm)	228 (9")				
Bearing Hubs	6	8			
Pull Type	Mounted & Trailed (Both)				
Tyre Attachment	Optional				
Gang Angle Adjustment	Semi Automatic & Hydraulic (Optional)				
Width of Cut (mm)	1912	2125	2345	2562	2778
Weight (Kg.Approx) (with 610X4.5mm Discs)	681	758	835	912	998
Tractor Power (HP)	50~60	65~75	80~90	100~110	115~135

*The weight and working data contained in the present leaflet are supplied for information only and are not binding. Specification and size can be altered as part of ongoing product modification / improvement.

U-SERIES MOUNTED OFFSET

DISC HARROW

Code **BEUSMODH**

Heavy Duty
Box Frame



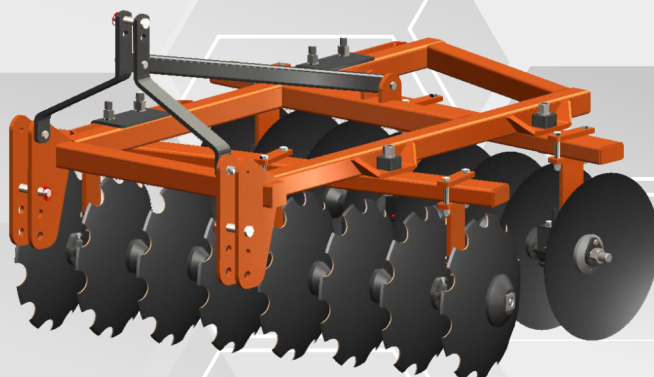
Heavy Duty
3-Point
Linkage



High Quality
Steel Discs



Heavy Duty
Bearing Hub



Features & Benefits

- Universal U-series Mounted Offset Disc Harrows are offset disc harrows with pipe frame that ensure excellent operating stability, increased weight per disc and much longer product life.
- Heavily weighted gangs provide excellent stability.
- Compatible with a variety of tractors.
- Can be used for both, surface disc harrowing (superficial ploughing) and intensive deep ploughing.
- Used in open field working for shattering of clods, preparation of soil for sowing and burial of organic substances and crop residue.
- Perfectly balanced cutting angle for best ploughing results.
- Easy to transport in mounted condition using the tractor lift.
- Available with plain as well as notched boron steel discs.
- High Quality bearing and hubs ensure smooth operation and put minimal load on the tractor
- High Quality seals prevent the entry of mud and water into the bearing and hubs.

Product Specifications

Description	BEUSMODH-16	BEUSMODH-18	BEUSMODH-20
Frame (mm)	80x80x6 SQ. TUBE & 120x60x6 RECT. TUBE		
Gang Bolt/ Axle Type (mm)	Solid Square 32mm(Rod)		
No. of Disc	16	18	20
Type of Disc / Blade	Boron Steel / High Carbon Steel and Plain / Notched Disc (Optional)		
Disc Diameter (mm)	508, 560 Dia. & Thickness 3~4.5mm		
Disc Spacing (mm)	228 (9")		
Bearing Hubs	6	8	
Pull Type	Mounted		
Gang Angle Adjustment	Manual		
Width Of Cut	1852	2068	2285
Weight (Kg.Approx) (with 508X3mm Discs)	570	640	680
Tractor Power (HP)	50~55	60~65	70~75

*The weight and working data contained in the present leaflet are supplied for information only and are not binding. Specification and size can be altered as part of ongoing product modification / improvement.

MOUNTED OFFSET

DISC HARROW

Code **BEMODH**

3 Point
Linkage with
Adjustable Rod



Easy Gang
Angle
Adjustable



Long Life
Bearing Hub



Combination of
Plain and
Notched Disc



Features & Benefits

- **Universal Mounted Offset Disc Harrows are medium duty disc harrows for fast and economical ploughing in soft and medium soil conditions.**
- Heavily weighted gangs provide excellent stability – ideal for 35 to 100 HP Tractor.
- Easy to transport in mounted condition using the tractor lift.
- High quality seals prevent the entry of mud and water into the bearings and hubs.
- Easy gang adjustment to change the cutting depth and to get the perfect level finish.
- Available with the options of high carbon steel discs & high quality boron steel discs with 46~50 HRC hardness
- Used in open field working for shattering of clods, preparation of soil for sowing and burial of organic substances and crop residue.
- High Quality bearing and hubs ensure smooth operation and put minimal load on the tractor

Product Specifications

Description	BEMODH-12	BEMODH-14	BEMODH-16	BEMODH-18	BEMODH-20	BEMODH-22	BEMODH-24
Frame (mm)	100X50 Channel, 75x10 Angle & 72x72x5 Square Tube						
Gang Bolt/ Axle Type (mm)	Solid Square 32 (Rod)						
No. of Disc	12	14	16	18	20	22	24
Type of Disc / Blade	Boron Steel / High Carbon Steel and Plain Rear / Front Notched Disc (Optional)						
Disc Diameter (mm)	460, 508, 560 Dia. & Thickness 3~5						
Disc Spacing (mm)	228 (9’')						
Bearing Hubs	4		6	8			
Pull Type	Mounted						
Gang Angle Adjustment	Manual						
Width of Cut (mm)	1420	1635	1852	2068	2285	2502	2718
Weight (Kg.Approx) (with 560X4mm Discs)	390	450	520	585	640	700	750
Tractor Power (HP)	30~40	40~50	50~60	60~70	70~80	80~90	90~100

*The weight and working data contained in the present leaflet are supplied for information only and are not binding. Specification and size can be altered as part of ongoing product modification / improvement.

MOUNTED TANDEM

DISC HARROW

Code **BETDHH** **BETDHM**



Self Aligned
Bearing Unit

Quick Hitch
Compatible
3-Point Linkage

High Quality
Steel Discs

Easy gang
Angle
Adjustment



Features & Benefits

- **Universal Mounted Tandem Disc Harrows are used in open field working for shattering of clods, preparation of soil for sowing and burial of organic substances and crop residue.**
- Universal Mounted Tandem Disc Harrows are designed in cross disc angle
- It is easy to use in tight corners because of its X type design.
- Heavy duty suitable for hard and medium soil conditions and medium duty suitable for soft and medium soil conditions.
- Easy to transport in mounted condition using the tractor lift.
- Available with the options of high carbon steel discs & high quality boron steel discs with 46~50 HRC hardness
- High Quality U C - bearing ensure smooth operation and put minimal load on the tractor
- Optional scalloped discs can be also provided for more aggressive digging and cutting action.
- High Quality seals prevent the entry of mud and water into bearing and hubs.

Product Specifications

Heavy Duty Tandem Disc Harrow

Medium Duty Tandem Disc Harrow

Description	BETDHH-20	BETDHH-24	BETDHM-12	BETDHM-16	BETDHM-20
Frame (mm)	72x72x5 (T) (Square Tubular Frame)		60x60x5 (T) (Square Tubular Frame)		
Gang Bolt/ Axle Type (mm)	Solid Square 28 (Rod)		Solid Square 25 (Rod)		
No. of Disc	20	24	12	16	20
Type of Disc / Blade	Boron Steel / High Carbon Steel and Plain / Notched Disc (Optional)				
Disc Diameter (mm)	508x3 (T)/ 558x4 (T) (Optional)		457x3 (T)/ 508x3 (T) (Optional)		
Width of Cut (mm)	2402	2842	1415	1848	2280
Disc Spacing (mm)	228 (9")				
Bearing Hubs	8 (UC-211)		8 (UC-210)		
Weight (Kg.Approx) (with 560X4/508X3mm Discs)	580	640	300	385	440
Tractor Power (HP)	55~65	75~90	25~30	35~40	45~50

*The weight and working data contained in the present leaflet are supplied for information only and are not binding. Specification and size can be altered as part of ongoing product modification / improvement.

POLY DISC DISC HARROW Code BEPDH

More Flexible
Colter
Arrangement



Heavy Duty
3-Point
Linkage



High Quality
Steel Discs



Heavy Duty
Shocker



Features & Benefits

- **Universal Poly Disc Harrows are used in open field working for shattering of clods, preparation of soil for sowing and burial of organic substances and crop residue.**
- Compatible with a variety of tractors.
- Can be used for both, surface disc harrowing (superficial ploughing) and intensive deep ploughing.
- Heavily weighted gangs provide excellent stability.
- Perfectly balanced cutting angle for best ploughing results.
- Easy to transport in mounted condition using the tractor lift.
- Available with plain as well as notched boron steel discs.
- High Quality bearing and hubs ensure smooth operation and put minimal load on the tractor
- High Quality seals prevent the entry of mud and water into the bearing and hubs.

Product Specifications

Description	BEPDH-5	BEPDH-6	BEPDH-7	BEPDH-8	BEPDH-9	BEPDH-10
Frame (mm)	Dia. 115 pipe with 100x20 Flat					
Gang Bolt/ Axle Type (mm)	Dia. 60mm C-Class Pipe with Solid Rod					
No. of Disc	5	6	7	8	9	10
Type of Disc / Blade	Boron Steel / High Carbon Steel and Plain / Notched Disc (Optional)					
Disc Diameter (mm)	560x4 (T)/ 610x4.5 (T)/ 660x6 (T) (Optional)					
Width of Cut (mm)	1202	1202	1453	1704	1955	2206
Disc Spacing (mm)	228 (9")					
Bearing Hubs	2 Nos. (Heavy Duty)					
3-Point Linkage / Category	Cat-II					
Weight (Kg.Approx) (with 660X6mm Discs)	370	370	425	480	545	600
Tractor Power (HP)	50~55	50~55	60~65	70~75	80~90	95~110

*The weight and working data contained in the present leaflet are supplied for information only and are not binding. Specification and size can be altered as part of ongoing product modification / improvement.

TRAILED OFFSET

DISC HARROW

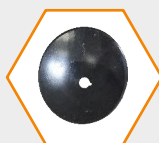
Code **BETODHT**

More Flexible
Gang Angle
Arrangement

Rear Mounted
Tyre Set

High Quality
Steel Discs

High Quality
Bearing Hub



Features & Benefits

- **Trailed Offset Disc Harrows are designed to work easily in tough operating conditions.**
- Can be used for both, surface disc harrowing (superficial ploughing) and intensive deep ploughing.
- Used in open field working for shattering of clods, preparation of soil for sowing and burial of organic substances and crop residue.
- Perfectly balanced cutting angle for best ploughing results.
- Easy to transport on rear mounted tiers.
- Available with the options of high carbon steel discs and high quality boron steel discs with 46-50 HRC hardness.
- High Quality bearing and hubs ensure smooth operation and put minimal load on the tractor
- High Quality seals prevent the entry of mud and water into the bearing and hubs.
- Adjustable gang angle

Product Specifications

Description	BETODHT-12	BETODHT-14	BETODHT-16
Frame (mm)	Angle Frame 90x90x8T		
Gang Bolt/ Axle Type (mm)	Round Pipe Dia. 60 with Solid Rod		
No. of Disc	12	14	16
Type of Disc / Blade	High Carbon Steel		
Disc Diameter (mm)	610 & Thickness 4~6		
3-Point Linkage / Category	Cat-II		
Disc Spacing (mm)	228 (9")		
Pull Type	Trailed		
Tyre Size	16x4 Solid Tyre		
Bearing Hubs	4 Nos.		
Width of Cut (mm)	1420	1635	1852
Weight (Kg.Approx) (with 610X6mm Discs)	540	580	635
Tractor Power (HP)	30~40	40~50	50~60

*The weight and working data contained in the present leaflet are supplied for information only and are not binding. Specification and size can be altered as part of ongoing product modification / improvement.



HARROWS

UNIVERSAL[®]

IMPLEMENT S

UP MODEL
DISC HARROW
Code BEUMDH

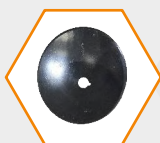
More Flexible
Drawbar
Arrangement



Heavy Duty
3-Point
Linkage



High Quality
Steel Discs



High Quality
Bearing Hub



Features & Benefits

- **UP Model Disc Harrows are suitable for soft and medium cultivated soil conditions and for wet land preparation for sowing.**
- Heavily weighted gangs provide excellent stability - ideal for 30 to 65 HP tractor.
- Used in open field working for shattering of clods, preparation of soil for sowing and burial of organic substances and crop residue.
- Easy to transport in mounted condition using the tractor lift.
- High Quality bearing and hubs ensure smooth operation and put minimal load on the tractor
- High Quality seals prevent the entry of mud and water into the bearing and hubs.
- Available with the options of high carbon steel discs and high quality boron steel discs with 46-50 HRC hardness

Product Specifications

Description	BEUMDH-12	BEUMDH-14	BEUMDH-16
Frame (mm)	65x8 Angle & 72x72x5 Square Tube		
Gang Bolt/ Axle Type (mm)	Round Pipe Dia. 60 with Solid Rod		
No. of Disc	12	14	16
Type of Disc / Blade	High Carbon Steel		
Disc Diameter (mm)	508, 560 Dia. & Thickness 3~4		
Gang Adjustable	Manual		
Disc Spacing (mm)	228 (9")		
Bearing Hubs	4 Nos.		
Pull Type	Mounted		
Width of Cut (mm)	1420	1635	1852
Weight (Kg.Approx) (with 510X6mm Discs)	360	410	465
Tractor Power (HP)	30~40	40~50	50~60

*The weight and working data contained in the present leaflet are supplied for information only and are not binding. Specification and size can be altered as part of ongoing product modification / improvement.



- EXTRA HEAVY DUTY SPRING LOADED CULTIVATOR
- SUPER VERTICAL SPRING LOADED CULTIVATOR
- BHARAT SPRING LOADED CULTIVATOR
- UNIVERSAL PROFILE RIGID CULTIVATOR
- UNIVERSAL BRACKET RIGID CULTIVATOR
- UNIVERSAL SUB SOILER

UNIVERSAL CULTIVATORS



CULTIVATORS

UNIVERSAL I M P L E M E N T S

EXTRA HEAVY DUTY

SPRING LOADED CULTIVATOR

Code **BEEHDSLC**



Reversible
Shovels

Heavy Duty
3-Point
Linkage

Heavy Duty
Springs

Forged Tyne



Features & Benefits

- **UNIVERSAL Extra heavy duty spring loaded Cultivator/tiller is designed for toughest tillage operations.**
- It is suitable for use in stone and root obstructed soil.
- Loosens and aerates the soil to a depth of upto nine inches.
- When one tyne strikes a buried object, the others continue to work at correct depth
- Spring Loaded Tyne Assemblies derive their strength from heavy duty angles, which once fixed to the immensely strong main frame cannot move out of position.
- It prepares seed beds quickly and economically.
- Comes with high quality reversible steel shovels & high quality spring steel springs.

Product Specifications

Description	BEEHDSLC-5	BEEHDSLC-7	BEEHDSLC-9	BEEHDSLC-11	BEEHDSLC-13	BEEHDSLC-15
Frame (mm)	100x50 Channel & 65x6 Angle Pair					
Tynes (mm)	50x25 Forged					
No. of Tynes	5	7	9	11	13	15
Type of Disc / Blade	Reversible Shoe Type & 8mm High Carbon Steel					
Tyne Spacing (mm)	228(9")					
Expansion Springs	O.D. 50, Wire Dia. 10 (28 Coil) (Spring Steel)					
Length (mm)	1084	1542	2000	2458	2916	3374
Width (mm)	880					
Height (mm)	1185					
Width of Cut (mm)	1010	1468	1925	2382	2839	3296
Weight (Kg. Approx)	210	225	285	345	410	480
Tractor Power (HP)	20~25	30~35	40~45	50~55	60~65	70~75

*The weight and working data contained in the present leaflet are supplied for information only and are not binding. Specification and size can be altered as part of ongoing product modification / improvement.

UNIVERSAL SUPER VERTICAL

SPRING LOADED CULTIVATOR

Code **BEUSVSLC**



Duck Foot
Shovels

Heavy Duty
3-Point
Linkage

Heavy Duty
Springs

Heavy Duty
Fabricated Tyne



Features & Benefits

- **UNIVERSAL SUPER vertical spring loaded tillers are heavy duty cultivators designed for toughest tillage operations.**
- It is used to stir, loosen and aerate the soil. Break up the clods of soil and cut the weeds on the soil surface.
- Can also be used to mix seeds or mineral fertilizers spread on surface and hoe plant lines after making necessary adjustments.
- When one tyne strikes a buried object, the others continue to work at correct depth
- It is used for secondary dressing of soil and preparing the seed bed.
- Cuts the crop roots and Improves the distribution of water.
- It keeps the moisture of soil as it does not process the soil by overturning and it hoes and airs by adjusting the changeable tyne distances.
- It comes with heavy duty fabricated tynes and high quality duck foot shovels.

Product Specifications

Description	BEUSVSLC-7	BEUSVSLC-9	BEUSVSLC-11	BEUSVSLC/-13
Frame (mm)	65x65x10 Angle Frame (or 100x50 Channel) & 65x10 Pair Flat			
Tynes (mm)	Fabricated one Piece 32mm thick			
No. of Tynes	7	9	11	13
Type of Blade / Shovel	Duck Foot (8" & 10" as per requirement)			
Tyne Spacing (mm)	228 (9")			
3-Point Linkage . Category	Cat-I & Cat-II			
Length (mm)	1550	2074	2464	2921
Width (mm)	900			
Height (mm)	1130			
Width of Cut (mm)	1750	2207	2664	3121
Weight (Kg Approx)	270	355	430	505
Tractor Power (HP)	40~45	50~55	60~65	70~75

*The weight and working data contained in the present leaflet are supplied for information only and are not binding. Specification and size can be altered as part of ongoing product modification / improvement.



CULTIVATORS

UNIVERSAL[®]

IMPLEMENT S

BHARAT SPRING LOADED CULTIVATOR

Code **BEBSLC**

Reversible
Shovels

Heavy Duty
3-Point
Linkage

Heavy Duty
Springs

Forged Tyne



Features & Benefits

- **BHARAT spring loaded Cultivator/tiller is simple in design but sturdy in performance.**
- It is suitable for use in soft and medium soil conditions.
- Loosens and aerates the soil to a depth of upto nine inches.
- When one tine strikes a buried object, the others continue to work at correct depth.
- The Dual spring loaded tyne assemblies derive their strength from heavy duty angles, which once fixed to the main frame cannot move out of position.
- It prepares seed beds quickly and economically.
- Comes with high quality reversible steel shovels & high Quality spring steel springs.

Product Specifications

Description	BEBSLC-7	BEBSLC-9	BEBSLC-11	BEBSLC-13	BEBSLC-15
Frame (mm)	75x40 Channel & 50x8 Pair Flat			100x50 Channel & 50x8 Pair Flat	
Tynes (mm)	50x22 Forged				
No. of Tynes	7	9	11	13	15
Type of Disc / Blade	Reversible Shoe Type & 8mm High Carbon Steel				
Tyne Spacing (mm)	228(9")				
Expansion Springs	O.D. 50, Wire Dia. 9.5 (25 Coil) (Spring Steel)				
Length (mm)	1542	2000	2458	2916	3374
Width (mm)	840				
Height (mm)	1040				
Width of Cut (mm)	1468	1925	2382	2839	3296
Weight (Kg. Approx)	170	210	270	330	425
Tractor Power (HP)	30~35	40~45	50~55	60~65	70~75

*The weight and working data contained in the present leaflet are supplied for information only and are not binding. Specification and size can be altered as part of ongoing product modification / improvement.



CULTIVATORS

UNIVERSAL[®]

IMPLEMENTS

UNIVERSAL PROFILE

RIGID CULTIVATOR

Code **BEPRC**



Reversible
Shovels

Heavy Duty
3-Point
Linkage

Heavy Duty
Box Frame

Single Piece
Profile Cut Tyne



Features & Benefits

- **UNIVERSAL Heavy Duty Profile Rigid Cultivator/tillers have a sturdy construction design and are capable of with standing tough working conditions of hard soils.**
- This Cultivator/Tiller can break up hard soil efficiently and perfectly.
- It uproots stubble and weeds to leave the ground perfectly worked.
- These Cultivator/tillers are suitable to work in root and stone free land.
- Tyne are mounted on heavy duty box frame thus making this a virtually maintenance free implement.
- Ideal for fitting seeding or seed cum fertilizer attachments.
- Comes with high quality reversible steel shovels.

Product Specifications

Description	BEPRC-5	BEPRC-7	BEPRC-9	BEPRC-11	BEPRC-13	BEPRC-15
Frame (mm)	72x72x6 Square Tube & 65x6 Angle Center Supports					
Tynes (mm)	Fabricated one Piece 20/22/25/28 (Optional)					
No. of Tynes	5	7	9	11	13	15
Tyne Spacing (mm)	228 (9")					
3-Point Linkage . Category	Cat-I & Cat-II					
Length (mm)	1048	1542	2000	2458	2916	3374
Width (mm)	880					
Height (mm)	1075					
Width of Cut (mm)	1010	1468	1925	2382	2839	3296
Weight (Kg. Approx)	150	170	210	250	290	330
Tractor Power (HP)	25~30	30~35	40~45	50~55	60~65	65~75

*The weight and working data contained in the present leaflet are supplied for information only and are not binding. Specification and size can be altered as part of ongoing product modification / improvement.



CULTIVATORS

UNIVERSAL[®]

IMPLEMENTS

UNIVERSAL BRACKET

RIGID CULTIVATOR

Code **BEBRC**



Reversible
Shovels

Heavy Duty
3-Point
Linkage

Heavy Duty
Box Frame

Heavy Duty
V-Clamps



Features & Benefits

- **UNIVERSAL Medium Duty Rigid tillers have a sturdy construction design and are capable of with standing tough working conditions of medium to hard soils.**
- It can break up hard soil efficiently and perfectly.
- It uproots stubble and weeds to leave the ground perfectly worked.
- These Cultivator/tillers are suitable to work in root and stone free land.
- Tynes are mounted on heavy duty box frame thus making this a virtually maintenance free implement.
- Highly durable V-Clamps holds the tynes perfectly in place & ensure much longer product life.
- Comes with high quality reversible steel shovels.

Product Specifications

Description	BEBRC-7	BEBRC-9	BEBRC-11	BEBRC-13
Frame (mm)	72x72x6 Square Tube & 65x6 Angle Center Supports			
Tynes (mm)	Fabricated one Piece 20/22/25/28 (Optional)			
No. of Tynes	7	9	11	13
Type of Blade / Shovel	Reversible Shoe Type & High Carbon Steel			
Tyne Spacing (mm)	228 (9")			
3-Point Linkage . Category	Cat-I & Cat-II			
Length (mm)	1552	2010	2468	2926
Width (mm)	765			
Height (mm)	1055			
Width of Cut (mm)	1468	1925	2382	2839
Weight (Kg Approx)	210	270	330	425
Tractor Power (HP)	30~35	40~45	50~55	60~65

*The weight and working data contained in the present leaflet are supplied for information only and are not binding. Specification and size can be altered as part of ongoing product modification / improvement.



CULTIVATORS

UNIVERSAL[®]

IMPLEMENT S

UNIVERSAL

SUB SOILER

Code BESS

Heavy Duty
3-Point
Linkage



Heavy Duty
Box Frame



Adjustable
Tyne



Heavy Duty
Shovels



Features & Benefits

- **Universal Sub Soiler is ideal to lift and shatter the hard bed pan that builds up under soil due to compaction over time.**
- Improves soil drainage. Improved soil water retention during dry season. Greatly reduced risk of water run-off during heavy rain.
- Improves soil fertility. By improving water penetration soil nutrients are more easily available to the plant. Moist soils heat up more easily during spring increasing in turn the development of soil microbes beneficial to plant growth.
- Optional wide range of roller/crumber available, which help in breaking lumps into smaller pieces. It also helps in depth control and steady running of the Sub Soiler.
- Adjustable depth & width.
- Optional dragging ball type attachment available with shoe assy.
- Reversible & replaceable sloped point.
- Available in 1, 2, 3 and 5 Arm sizes.

Product Specifications

Description	BESS-1	BESS-2	BESS-3	BESS-5
Length (mm)	456	900	958	1140
Width (mm)	857	1232	1536	2512
Height (mm)	1050~1515			
Tyne (mm)	150x25			
No. of Arms / Tyne	1	2	3	5
3-Point Linkage	Cat-II			
Weight (Kg. Approx)	85	205	300	485
Tractor Power (HP)	40~55	60~75	80~90	100~120

*The weight and working data contained in the present leaflet are supplied for information only and are not binding. Specification and size can be altered as part of ongoing product modification / improvement.



- LASER GUIDED LAND LEVELER
- HEAVY DUTY LAND LEVELER
- ROTARY SLASHER
- DISC RIDGER
- TYNE RIDGER
- SUPER TYNE RIDGER

UNIVERSAL LANDSCAPING



LASER GUIDED

LAND LEVELER

Code **BEBULG**

Round Type
Laser Receiver

Digital Control
Box

Robust Bucket
Design

Chargeable Laser
Transmitter with
D.C. Current Supply



Features & Benefits

- **UNIVERSAL Laser guided land levelers perfectly level the ploughed field and make it ready for cultivation.**
- By perfectly levelling the land, it facilitate the most efficient and complete utilisation of the cultivable area.
- Facilitates a uniform distribution of water in the field.
- Reduces the time and water required in irrigating the field.
- Can be transported easily using the hydraulic cylinder and tires mechanism.
- The bucket's adjustable levelling blade is made for special alloy steel that lasts much longer.
- Hassle-free, reliable, effective and easy to operate power mast which saves both time and energy.
- Available with different options of transmitter and receiver with different range options.

Product Specifications

Description	BEBULG-150	BEBULG-175	BEBULG-200	BEBULG-225	BEBULG-250
Frame (mm)	Square Tube 132x132x6 & 8 Sheet				
Drawbar (mm)	Square Tube 100x100x6				
Axle Type (mm)	72x72x6 Square Tube Fabricated & Spindle				
Range of Transmitter (meter)	Dia. 600~800 Meter				
Range of Receiver (meter)	Dia. 600~800 Meter				
Control Box Type	Digital				
Power Most	Electric Power most with 12v Motor Operated				
Hydraulic Cylinder	2 Ton Capacity				
Bearing Hubs (Nos)	2				
Bucket Width (mm)	1300				
Bucket Height (mm)	990				
Working Width (mm)	1500	1750	2000	2250	2500
Weight (Kg. Approx)	610	635	670	705	740
Tractor Power (HP)	35~45	50~55	60~65	70~75	80~90

*The weight and working data contained in the present leaflet are supplied for information only and are not binding. Specification and size can be altered as part of ongoing product modification / improvement.



LANDSCAPING

UNIVERSAL
I M P L E M E N T S

UNIVERSAL HEAVY DUTY

LAND LEVELER

Code **BEHDLL**

High Quality
Steel Blade

Heavy Duty
Bucket

Heavy Duty
Linkage Support

Heavy Duty
3-Point Linkage



Features & Benefits

- UNIVERSAL Heavy Duty land levelers are suitable to level the ploughed field, as needed and make it ready for cultivation
- UNIVERSAL land levelers increase productivity and helps save on the cost of irrigation.
- It is a simple and rugged implement which is directly fitted to the tractor.
- Leveling blade is made out of special high carbon steel which gives it double the life compared to other ordinary blades.
- Useful for flood irrigation.
- Available in 6,7 and 8 feet width.

Product Specifications

Description	BEHDLL-6	BEHDLL-7	BEHDLL-8
Frame (mm)	75x20 Flat & Dia. 28 Tie Rod & 65x16 Lever Flat		
Scraper Sheet (mm)	10mm Main Sheet & Side Support 100x12 & 25x10 Flat & 40x5 Angle Center Support		
Type of Blade (mm)	75x10 High Carbon Steel Blade (Reversible)		
3- Point Linkage	Cat-I & Cat-II		
Pull Type	Mounted		
Width of Cut (mm)	1850	2150	2450
Weight (kg. Approx)	140	150	170
Tractor Power (HP)	30~35	40~45	55~60

*The weight and working data contained in the present leaflet are supplied for information only and are not binding. Specification and size can be altered as part of ongoing product modification / improvement.



UNIVERSAL
POST HOLE DIGGER
Code **BEPHDS**

Heavy Duty
Gear Box

Storage Stand
(Optional)

Long Lasting
Wear Resistant
Blades

Shear Bolt/Clutch
Type PTO Shaft



Features & Benefits

- Fast and easy method to dig holes for planting.
- PTO driven implement.
- Heavy Duty gearbox & PTO shaft with Shear Bolt / Slip clutch for overload protection.
- Shocker assembly to control oscillating and smooth operation.
- Available in 6", 9", 12" and 18" diameter options.
- Hard and highly durable cutting tip for long product life.

Product Specifications

Description	BEPHDS-6	BEPHDS-9	BEPHDS-12	BEPHDS-18
Frame (mm)	Heavy Duty Tubular Frame (Seamless Pipe Dia. 90x8 T) with 20mm Sheet			
Working Depth (mm)	890			
Hitch	Cat-II			
Gear Box	Compatible with 75HP max			
Gear Box output Shaft	Dia. 50 mm			
Input PTO RPM	540			
PTO Type	Shear Bolt/Clutch Type (Optional)			
Auger Length (mm)	1100			
Blade & End Point	High Quality Steel			
Auger Size	6"	9"	12"	18"
Accessories (Optional)	Storage Stand			
Weight (Kg Approx)	200	220	230	237
Tractor Power (HP)	35~75			

*The weight and working data contained in the present leaflet are supplied for information only and are not binding. Specification and size can be altered as part of ongoing product modification / improvement.



STRAW MANAGEMENT

UNIVERSAL[®]

IMPLEMENT S

UNIVERSAL
ROTARY SLASHER
Code **BERC**

Heavy Duty
Gear Box

Heavy Duty
Supporting
Wheel

Highly Durable
Long Lasting
Blades

PTO Shaft
with Overload
Protection



Features & Benefits

- **Universal Rotary Slasher can easily cut thick and tall weed plants and grass and is an essential equipment for leveling uneven grass or park lawn**
- Comes with heavy duty supporting wheel assembly for highly stable and smooth operations
- Its sharp blades and sturdy structure improve its performance and make it long-lasting.
- It offer adjustable cutting height up to 25mm.
- It is very useful for cutting rough & tough shrubs spread in large area.
- Rotary Slasher has reversible steel blades for cutting, which increases total life of the blade.
- Tractor driven.
- Optional slip clutch PTO/Sheer bolt PTO.
- Rotor Speed output 720 RPM
- Safety chain Shield Standard.
- Available in 48", 60", 72" and 84" sizes.

Product Specifications

Description	BERC-48	BERC-60	BERC-72	BERC-84
Frame (mm)	Fabricated Frame Sheet 5~6 (T) with 4x6 Angle Support			
Cutting Width (inch)	48”	60”	72”	84”
Transport Width (mm)	1372	1676	1981	2235
Overall length (mm)	1880	2184	2591	2743
Cutting Height (mm)	25~200			
Hitch	Cat-I & Quick Hitch	Cat-I, Cat-II & Quick Hitch		Cat-II & Quick Hitch
Blade Carrier	Fabricated Carrier with Swivel Blade			
PTO Shaft	Shear Bolt/Slip Clutch (Optional)			
P.T.O RPM	540			
Blade Rotating Speed (rpm)	720			
Weight (Kgs. Approx.)	390	450	510	600
Tractor Power (HP)	25~35	40~45	50~55	60 & Above

*The weight and working data contained in the present leaflet are supplied for information only and are not binding. Specification and size can be altered as part of ongoing product modification / improvement.

UNIVERSAL

DISC RIDGER

Code **BEDR**

Adjustable
Cutting
width



Heavy Duty
3- Point
Linkage



High Quality
Steel Discs



Adjustable
Bearing Hub



Features & Benefits

- The discs of UNIVERSAL disc ridgers are adjustable along the frame to vary bund (Ridge) width and height.
- The disc angle is also easily adjustable.
- Available with the option of high carbon alloy steel discs or high quality boron steel disc with 45-50 HRC hardness.
- Heavy duty box type frame capable of operating in tough conditions.
- Available in one row and two row ridged type seed bed maker with 2-discs and 4-discs respectively.
- High quality bearings and hubs ensure smooth operation and put minimal load on the tractor.
- High quality seals prevent the entry of mud and water into the bearing and hubs.
- Size and depth of the ridge can be adjusted.

Product Specifications

Description	BEDR-1	BEDR-2
Frame (mm)	100x100x6 & 60x60x6 Square Tube	
Axle Type	Forged Spindle	
No. of Disc	2	4
Type of Disc / Blade	Plain / Notched (Boron/High Carbon Steel)	
Disc Diameter (mm)	610,660,710 & Thickness 4~8 (T)	
Bearing Hubs	2	4
3-Point Linkage	Cat-II	
Pull Type	Mounted	
Width of Cut (mm Approx)	950	1425
Weight (Kg.Approx) (with 660X6mm Discs)	230	440
Tractor Power (HP)	45~65	70~90

*The weight and working data contained in the present leaflet are supplied for information only and are not binding. Specification and size can be altered as part of ongoing product modification / improvement.



UNIVERSAL TYNE RIDGER Code **BETR**



**Sturdy Main
Frame**



**Heavy Duty
3- Point
Linkage**



**Adjustable
Tyne**



**Adjustable
Furrows**



Features & Benefits

- **UNIVERSAL Tyne Ridgers quickly and economically make simple soil ridges in ploughed/tilled soils.**
- The furrows can be easily spaced (widened or narrowed) as per the crop requirement.
- The wings angle can be changed as per requirement.
- Sturdy pipe box type frame for trouble free furrowing in tough soil conditions.
- These are mostly used for making ridges for plantation of vegetables, sugarcane and for similar purposes.
- Depth of the Ridger could be adjusted with tractor lift or the side tires.
- Available sizes are in 2 & 3 furrow, with and without tire facility.

Product Specifications

Description	BETR-2	BETR-3
Frame (mm)	100x100x6 (Square Tube)	
No. of Furrows	2	3
Height Adjustable Tyne (mm)	Fabricated Tyne 700x75x32[T]	
Type of Shovel	Reversible C-Type (High Carbon Steel)	
Tyne Distance (mm)	500~1000	
Three Point Linkage	Cat - II	
Overall Length (mm)	1843	2768
Weight (Kgs. Approx.)	190	220
Tractor Power (HP)	25~35	40~55

*The weight and working data contained in the present leaflet are supplied for information only and are not binding. Specification and size can be altered as part of ongoing product modification / improvement.

UNIVERSAL SUPER

TYNE RIDGER
Code **BEUSTR**



Heavy Duty
H-Type
Main Frame

Heavy Duty
3- Point
Linkage

Adjustable
Furrows

Adjustable
Tynes with
Heavy Duty Clamps



Features & Benefits

- **UNIVERSAL SUPER Tyne Ridgers have heavy duty H-type box frame for highly stable operations in all soil conditions.**
- UNIVERSAL SUPER Tyne Ridgers quickly and economically make simple soil ridges in ploughed/tilled soils.
- The furrows can be easily spaced (widened or narrowed) as per the crop requirement.
- The wings angle can be changed as per requirement.
- Heavy duty H-Type box frame capable of operating in all type soil conditions.
- These are mostly used for making ridges for plantation of vegetables, sugarcane and for similar purposes.
- Depth of the Ridger could be adjusted with tractor lift or the side tires.
- Available sizes are in 3,4 and 5 furrow, with and without tire facility.
- More adjustable tyne depth for dipper furrowing.
- Heavy duty forged tyne breakers for trouble free operations

Product Specifications

Description	BEUSTR-3	BEUSTR-4	BEUSTR-5
Frame (mm)	Heavy Duty H-Type frame 100x100x6 (Square Tube)		
No. of Furrows	3	5	5
Height Adjustable Tyne (mm)	Fabricated Tyne 800x75x32[T] (1000x75x32[T] Optional)		
Type of Shovel	Reversible C-Type (High Carbon Steel)		
Tyne Distance (mm)	500~1000		
Three Point Linkage	Cat - II		
Overall Length (mm)	2768	3683	4598
Weight (Kgs. Approx.)	235	315	380
Tractor Power (HP)	45~60	65~80	90~110

*The weight and working data contained in the present leaflet are supplied for information only and are not binding. Specification and size can be altered as part of ongoing product modification / improvement.



➤ UNIVERSAL TIPPING TRAILER

HAULAGE



HAULAGE

UNIVERSAL I M P L E M E N T S

UNIVERSAL
TIPPING TRAILER
Code **BEATT**



Telescopic
Hydraulic
Cylinder



Brake Light
Reflectors &
Indicators



Vertical Screw
Jack for
Easy Parking



Detachable
Drawbar for
Increase Loadability



Features & Benefits

- Flexibility of loading / unloading by simply tipping the trailer which saves overall operating cost of transportation.
- High grade hub, axle, bearings and tipping mechanism ensure long life of the trailer.
- Easily transportable as it gets easily hitched to any tractor
- Well designed for towing and loading stability.
- Wide tubeless tyres.
- Heavy duty frame ensures greater strength and stability.
- Reliable and heavy duty hydraulic cylinder that works under varying work conditions.
- Removable and drop down door and sides provide flexibility of loading and unloading.

Product Specifications

Description	BEAT2WT-3TON	BEAT2WT-5TON	BEAT2WT-9TON
Outer Dimension (mm)	8x6x2 Feet (2435x1828x610)	10x6x2 Feet (3048x1828x610)	12x6x2 Feet (3658x1828x610)
Main Chassis (mm)	125x65	150x75	200x75
Floor Sheet (mm)	4		
Side Wall Sheet (mm)	2~3 (Corrugated)		
Tires	7.50x16	9.00x16	
Ring Hitch (mm)	50 Dia.		65 Dia.
Hydraulic Cylinder Capacity	10 Ton		15 Ton
Axle (mm)	75 Square		90 Square
Axle Bearing	32214 Inner & 32211		32017 Inner & 32211
Drawbar	Detachable Type / Fixed		
Parking Stand	Screw Jack / Monkey Stand		
Leaf Spring (Optional)	36"		42"
Weight (Kg Approx)	1250	1460	1800
Tractor Power (HP)	30~45	50~65	70~90

*The weight and working data contained in the present leaflet are supplied for information only and are not binding. Specification and size can be altered as part of ongoing product modification / improvement.



BLADES

UNIVERSAL[®]
I M P L E M E N T S

UNIVERSAL SUPER BORON STEEL BLADES



TYPE-C



TYPE-L



TYPE-J

Features & Benefits

- Special grade Boron Alloy Steel.
- All Universal Super Boron Blades undergo special heat treatment process.
- Hardness- **HRC 46-50**
- Available in L, C and J type shapes.
- Best quality available at attractive Price.



SIZES AVAILABLE

14~57mm

14~46mm

12~44mm

12~57mm

12~40mm

14~44mm

11.5~57mm



Manufacturers & Exporters of Agricultural Implements (SINCE 1966)



Tillage



Landscaping



Seeding & Plantation



Haulage



BHARAT ENGINEERING COMPANY

Mugal Majra Road, Karnal, Haryana, India

Contact : +91-97291 03337

UNIVERSAL
I M P L E M E N T S



INFO@UNIVERSALIMPLEMENTS.COM



EXPORT@UNIVERSALIMPLEMENTS.COM



WWW.UNIVERSALIMPLEMENTS.COM